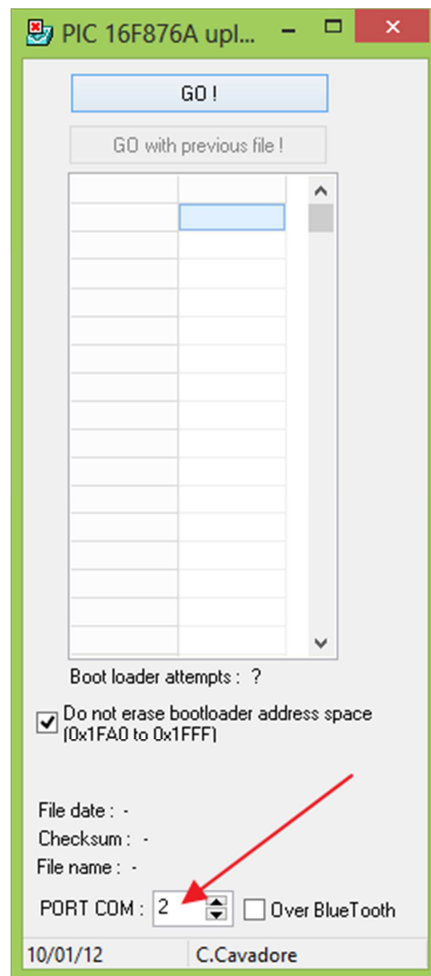
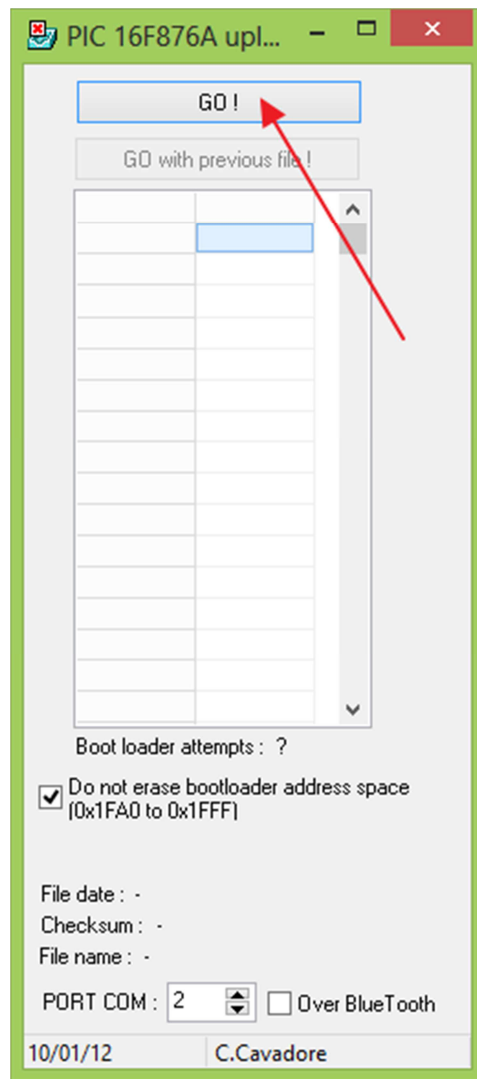


## Firmware upgrade procedure

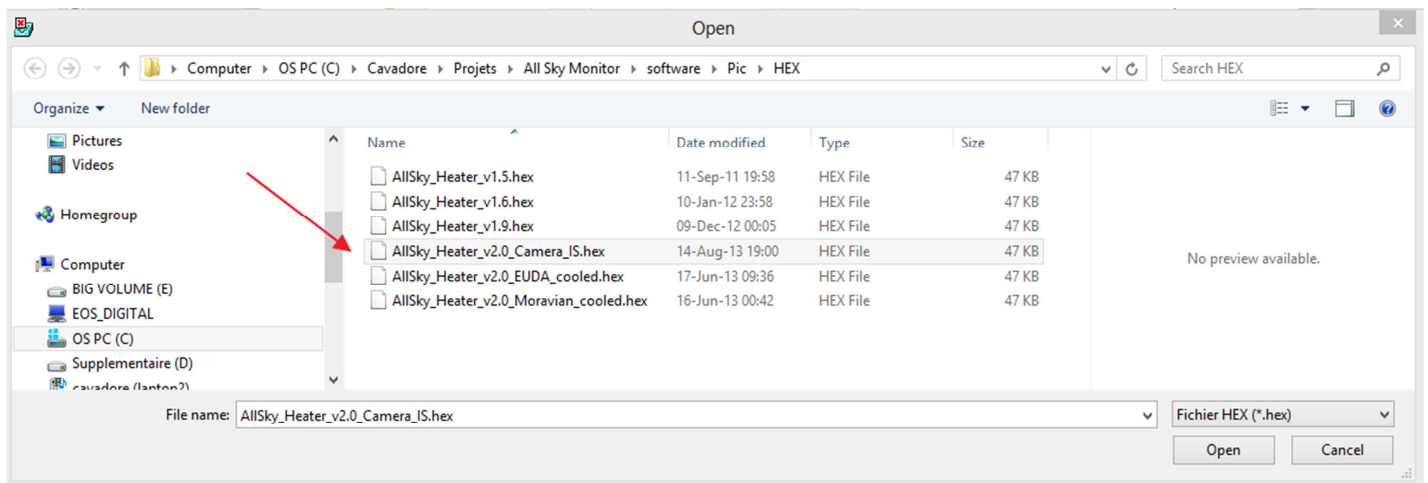
1. Close all software that controls the camera, leave the camera ON (i.e powered)
2. Start **UpLoader\_Pic.exe**, then select the COM port number.



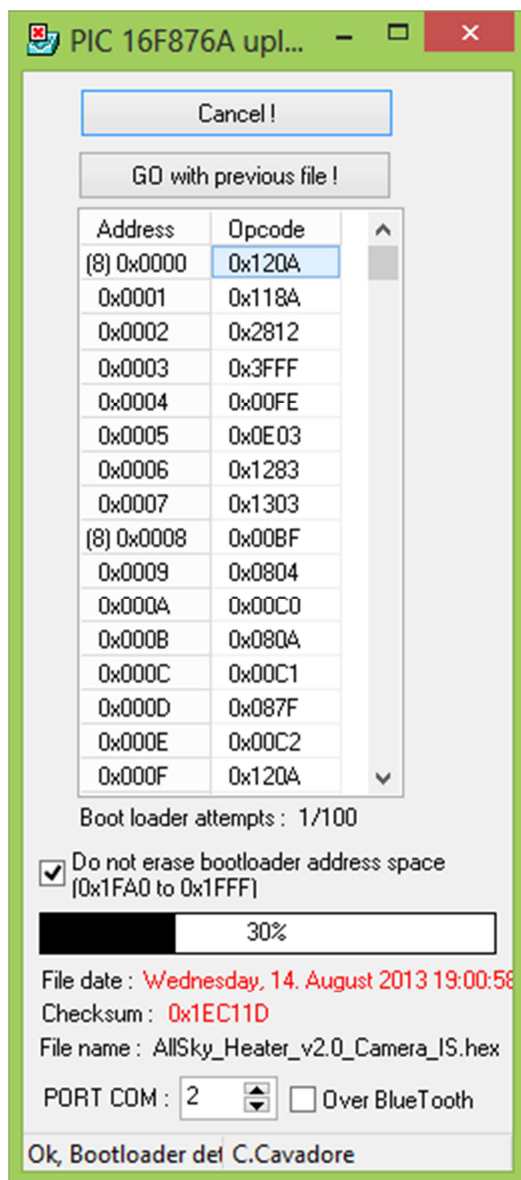
3. Then press « GO ». This will open a file selector.



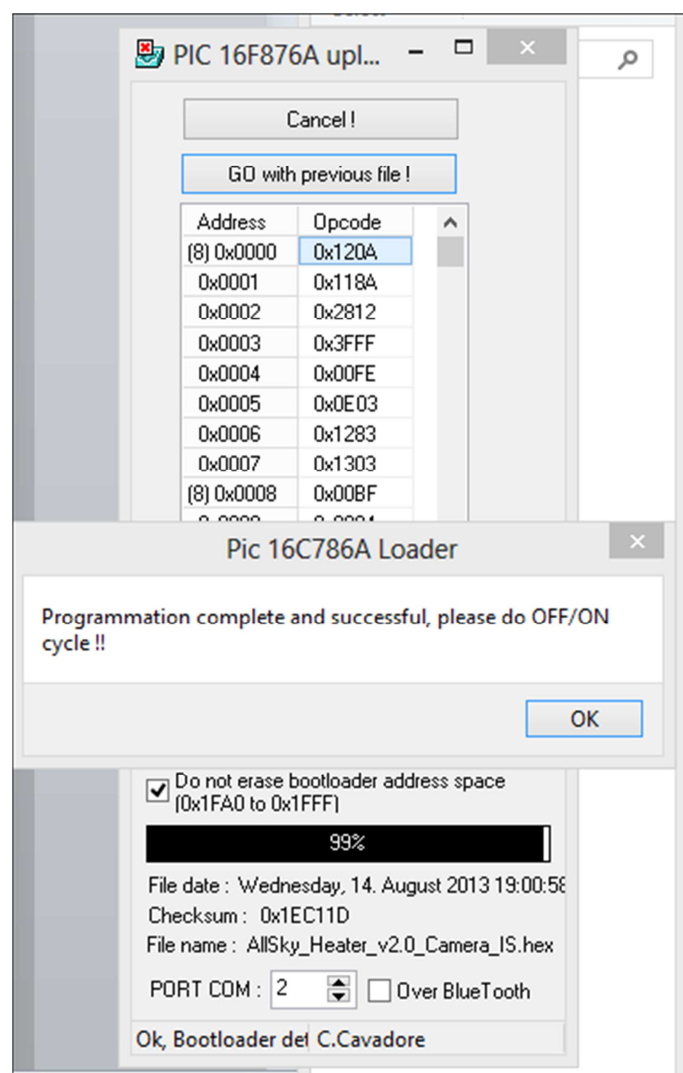
4. Select the firmware file, this is an **.HEX** file



5. The firmware starts to upload binary data to the camera. **NEVER disconnect the camera during the upgrade, do not kill the software, otherwise the camera will not be able to restart and need to be returned to.**



6. Once completed this message box pops up, just click OK, then you can close the Start UpLoader\_Pic.exe software.



7. You need to power OFF/ON cycle the camera to be able to connect to it. The firmware upgrade process is now completed.